

**RONDELLE**



**BOTECO<sup>®</sup>**

**IMPUGNATURE DI MANOVRA**

# ART. Q260

## RONDELLA ZIGRINATA

**MATERIALE:**

Resina fenolica.  
Resistente ad olii e grassi.  
Resistente ad alte temperature.

**SUPERFICIE:**

Lucida.

**COLORE:**

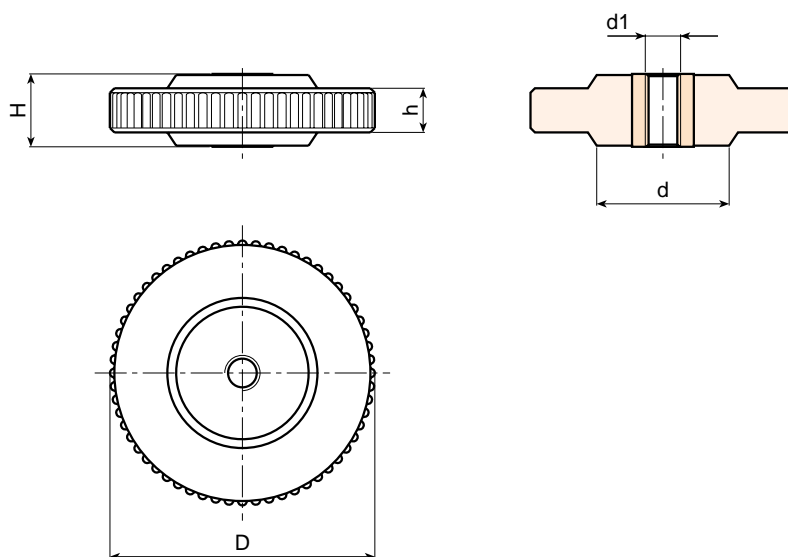
Nero (RAL 9011).

**INSERTO:**

Boccola filettata passante in acciaio zincato.

**RICHIESTE SPECIALI:**

- Su richiesta e per quantità gli inserti possono essere forniti in materiale diverso



Art.	D	H	d	h	d1	Peso (gr)
Q260-45 M6	47	10	-	-	M6	31
Q260-45 M8	47	10	-	-	M8	32
Q260-45 M10	47	10	-	-	M10	34
Q260-45 M12	47	10	-	-	M12	35
Q260-45 M14	47	10	-	-	M14	38
Q260-45 M16	47	10	-	-	M16	42
Q260-60 M8	60	16	30	11	M8	62
Q260-60 M10	60	16	30	11	M10	65
Q260-60 M12	60	16	30	11	M12	68
Q260-60 M14	60	16	30	11	M14	70
Q260-60 M16	60	16	30	11	M16	73



BOTECA

# ART. Q261

## RONDELLA LOBATA

**MATERIALE:**

Poliammide rinforzata.  
Resistente ad olii e grassi.

**SUPERFICIE:**

Satinata.

**COLORE:**

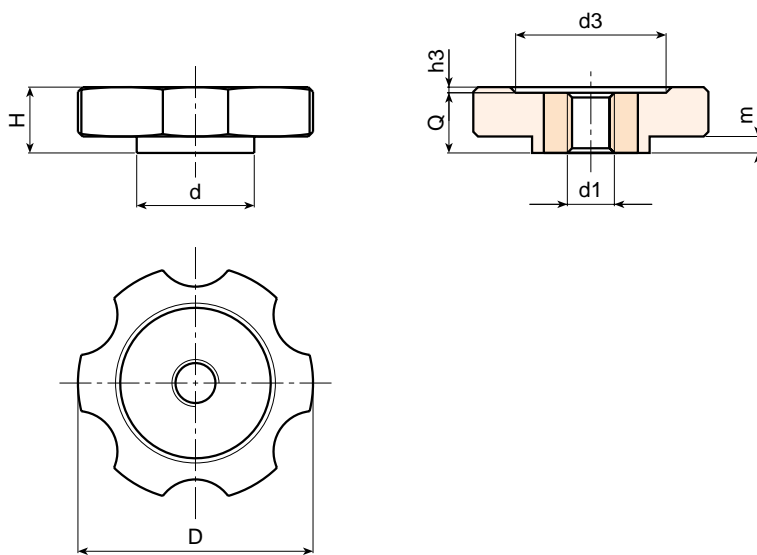
Nero (RAL 9011).

**INSERTO:**

Boccola filettata passante in acciaio zincato.

**RICHIESTE SPECIALI:**

- Su richiesta e per quantità gli inserti possono essere forniti in materiale diverso.
- Su richiesta e per quantità colori come da tabella a pag. 7.



Art.	D	H	d	m	h3	d3	d1	Q	Peso (gr)
Q261-40 M08	40	12	25	2	1,5	22	M8	11	21
Q261-40 M10	40	12	25	2	1,5	22	M10	11	22
Q261-40 M12	40	12	25	2	1,5	22	M12	11	24
Q261-50 M08	50	14	25	3,5	1,5	32	M8	13	31
Q261-50 M10	50	14	25	3,5	1,5	32	M10	13	32
Q261-50 M12	50	14	25	3,5	1,5	32	M12	13	35



BOTECA

# ART. Q262

## RONDELLA ZIGRINATA

**MATERIALE:**

Poliammide rinforzata.  
Resistente ad olii e grassi.

**SUPERFICIE:**

Satinata.

**COLORE:**

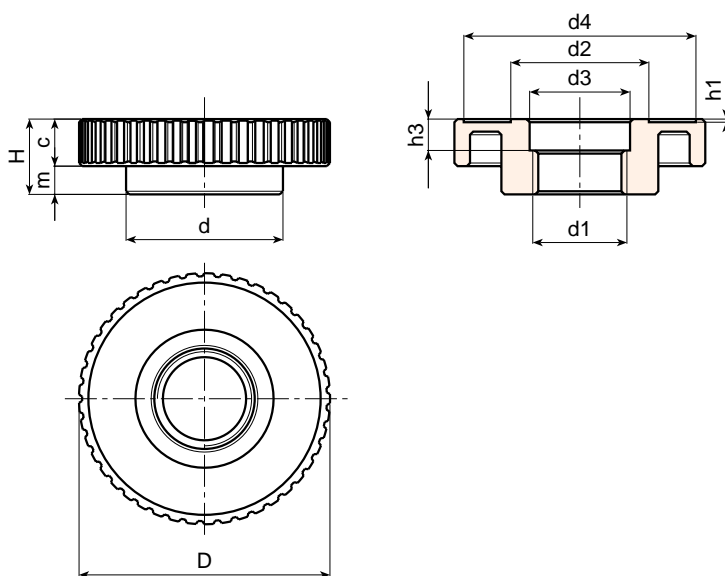
Nero (RAL 9011).

**FORO:**

Foro filettato passante nella plastica ottenuto per stampaggio.

**RICHIESTE SPECIALI:**

- Su richiesta e per quantità i fori possono essere forniti con misure speciali.



Art.	D	H	d	c	m	h1	h3	d2	d3	d4	d1	Peso (gr)
Q262-80 M30x1,5	81	24	50	14,5	9,5	1	10	43,5	32	74	M30x1,5	65

# ART. Q263

## RONDELLA ZIGRINATA

**MATERIALE:**

Poliammide rinforzata.  
Resistente ad olii e grassi.

**SUPERFICIE:**

Satinata.

**COLORE:**

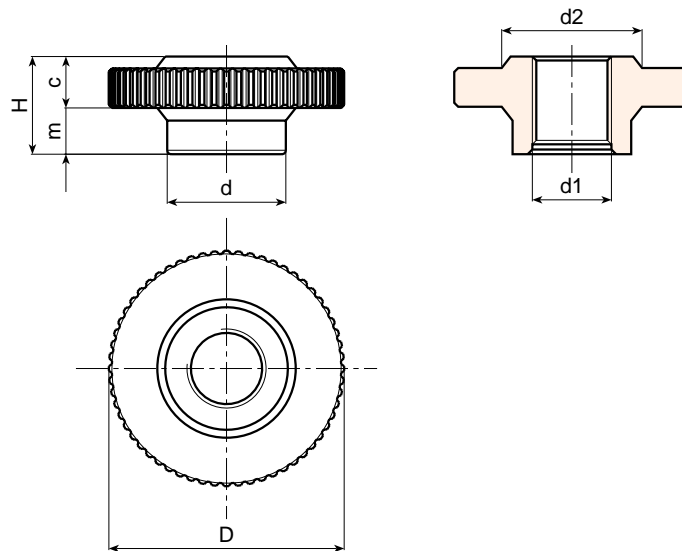
Nero (RAL 9011).

**FORO:**

Foro filettato passante nella plastica ottenuto per stampaggio.

**RICHIESTE SPECIALI:**

- Su richiesta e per quantità i fori possono essere forniti con misure speciali.



Art.	D	H	d	c	m	d2	d1	Peso (gr)
Q263-60 M20	60	25	30	12	13	35	M20	38
Q263-60 M24	60	25	30	12	13	35	M24	35

RONDELLA

# ART. Q264

## RONDELLA LOBATA 6 LOBI

**MATERIALE:**

Poliammide rinforzata.  
Resistente ad olii e grassi.

**SUPERFICIE:**

Satinata.

**COLORE:**

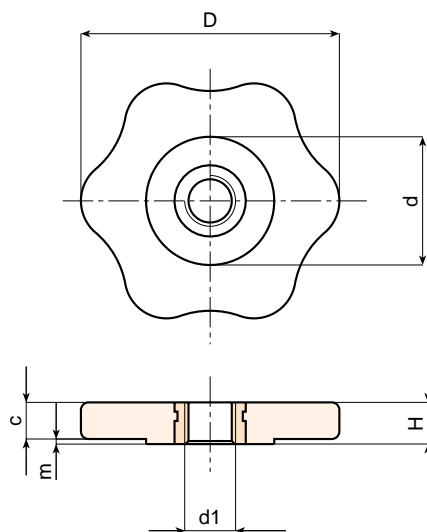
Nero (RAL 9011).

**INSERTO:**

Boccola in ottone filettata passante.

**RICHIESTE SPECIALI:**

- Su richiesta e per quantità gli inserti possono essere forniti in materiale diverso.
- Su richiesta e per quantità colori come da tabella a pag. 7.

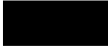


























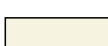


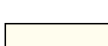

Art.	D	H	d	c	m	d1	Peso (gr)
Q264-50 M06	50	8	25	7	1	M6	18
Q264-50 M08	50	8	25	7	1	M8	18
Q264-50 M10	50	8	25	7	1	M10	20



**BOTECA**

## TABELLA COLORI

R A L			
COLORE		RAL	COD.
Nero		9011	01
Arancio		2004	02
Arancio		2011	03
Bianco		9010	04
Blue		5002	05
Blue		5005	06
Blue		5015	07
Blue		5018	19
Blue		5019	21
Blue		5010	22
Giallo		1007	09
Giallo		1021	10
Grigio		7024	12
Grigio		7035	13
Rosso		3000	16
Verde		6024	17

A L T R I C O L O R I			
COLORE		RIF.	COD.
Bianco		-	52
Blue		-	53
Blue		pant. 645 U	54
Blue		pant. 300	55
Grigio		-	57
Grigio		-	59
Grigio		NCS 7500	60
Rosso		-	64
Rosso		-	65
Naturale		-	66
Verde		-	70
Marrone		-	71
Crema		-	72
Violetto		-	73





**BOTECO Spa** - 36010 ZANÈ (VI) ITALY  
Via L. Pettinà, 16 (laterale di Via Cuso)  
P.O. BOX 63 36010 Zanè  
Tel. Centralino ++39-0445.316411 - Fax ++39-0445.316400  
Fax Commerciale ++39-0445.316401  
Fax Amministrativo ++39-0445.316402  
E-Mail: boteco@boteco.it - commerciale@boteco.it  
amministrazione@boteco.it - Home Page: www.boteco.it

RIVENDITORE AUTORIZZATO

