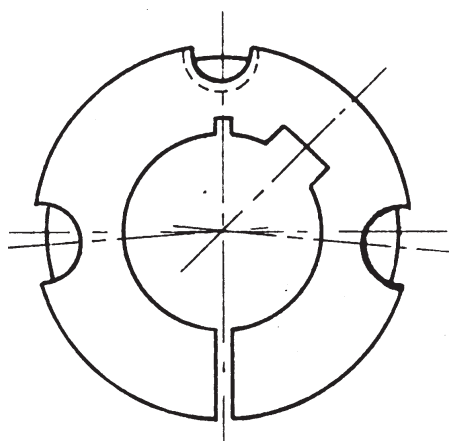
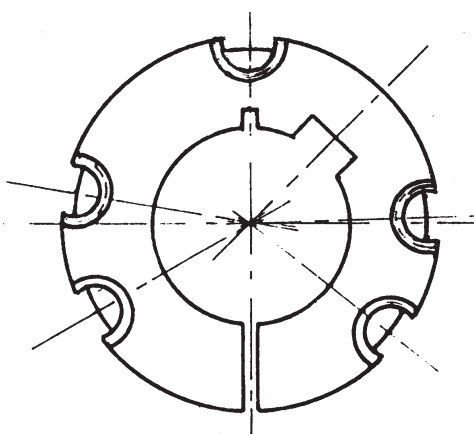


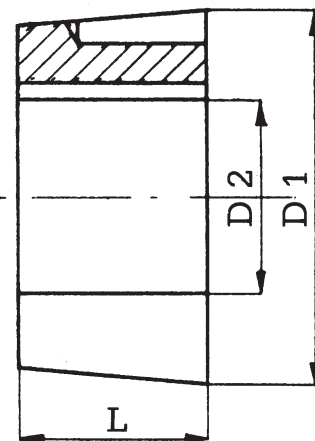
BUSSOLE CONICHE "RCB"®



ESECUZIONE A
No. 3 FORI



ESECUZIONE B
No. 5 FORI



SERIE METRICA: Alesaggi in mm. ISO G7 - Cave DIN 6885-JS9

| TIPO BUSSOLA | ESEC. | L | D1 | Solo foro iniziale D2 H8 | Foro D2 | Viti B.S.W. | Coppia di serraggio N/m |
|-----------------|-------|-----|-------|--------------------------------|--|----------------|-------------------------------|
| 1008 | A | 22 | 35 | 8 | 10 - 12 - 14 - 16 - 18 - 19 - 20 - 22 - 24 - 25 | 1/4" x 1/2" | 5.6 |
| 1108 | A | 22 | 38 | 12 | 14 - 19 - 20 - 24 - 25 | 1/4" x 1/2" | 5.6 |
| 1210 | A | 25 | 47.5 | 12 | 14 - 16 - 18 - 19 - 20 - 24 - 25 - 28 - 30 - 32 | 3/8" x 5/8" | 19.6 |
| 1215 | A | 38 | 47.5 | 12 | 14 - 19 - 20 - 24 - 25 - 28 | 3/8" x 5/8" | 19.6 |
| 1610 | A | 25 | 57 | 12 | 14 - 16 - 19 - 20 - 24 - 25 - 28 - 30 - 32 - 35 - 38 - 40 - 42 | 3/8" x 5/8" | 19.6 |
| 1615 | A | 38 | 57 | 12 | 19 - 20 - 22 - 24 - 25 - 28 - 30 - 32 - 35 - 38 - 40 | 3/8" x 5/8" | 19.6 |
| 2012 | A | 32 | 70 | 16 | 19 - 20 - 24 - 25 - 28 - 30 - 32 - 35 - 38 - 40 - 42 - 45 - 48 - 50 | 7/16" x 7/8" | 30.4 |
| 2517 | A | 45 | 85.5 | 15 | 19 - 20 - 24 - 25 - 28 - 30 - 32 - 35 - 38 - 40 - 42 - 45 - 48 - 50 - 55 - 60 - 65 | 1/2" x 1" | 48 |
| 3020 | A | 51 | 108 | 20 | 28 - 30 - 32 - 35 - 38 - 40 - 42 - 45 - 48 - 50 - 55 - 60 - 65 - 70 - 75 | 5/8" x 1" 1/4 | 90 |
| 3030 | A | 76 | 108 | 30 | 38 - 42 - 45 - 48 - 50 - 55 - 60 | 5/8" x 1" 1/2 | 90 |
| 3525 | B | 65 | 127 | 30 | 38 - 40 - 42 - 45 - 48 - 50 - 55 - 60 - 65 - 70 - 75 - 80 | 1/2" x 1" 1/2 | 113 |
| 3535 | B | 89 | 127 | 30 | 40 - 42 - 45 - 48 - 50 - 55 - 60 - 65 - 70 - 75 - 80 - 85 - 90 | 1/2" x 1" 1/2 | 113 |
| 4030 | B | 76 | 146 | 30 | 40 - 42 - 45 - 48 - 50 - 55 - 60 - 65 - 70 - 75 - 80 - 90 | 5/8" x 1" 1/2 | 169 |
| 4040 | B | 102 | 146 | 35 | 50 - 55 - 60 - 65 - 70 - 75 - 80 - 85 - 90 - 95 | 5/8" x 1" 3/4 | 169 |
| 4535 | B | 89 | 162 | 30 | 65 - 70 - 75 - 80 - 85 - 90 - 95 - 100 - 110 - 120 | 3/4" x 2" | 192 |
| 4545 | B | 115 | 162 | 35 | 65 - 70 - 75 - 80 - 85 - 90 - 95 - 100 - 110 | 3/4" x 2" | 192 |
| 5040 | B | 102 | 177.6 | 50 | 70 - 75 - 80 - 85 - 90 - 100 - 110 - 120 - 125 | 7/8" x 2" 1/4 | 272 |
| 5050 | B | 127 | 177.6 | 50 | 70 - 75 - 80 - 85 - 90 - 95 - 100 - 110 - 115 - 120 - 125 | 7/8" x 2" 1/4 | 272 |