



COPPIE CONICHE



BEVEL GEAR PAIRS
KEGELRADGETRIEBE
COUPLES CONIQUES
PARES CONICOS

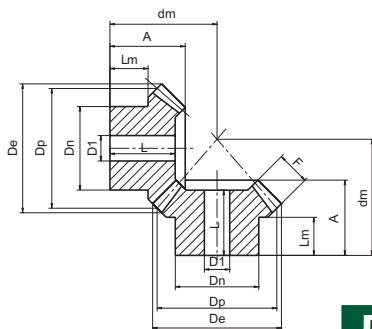


COPPIE CONICHE ad assi normali

angolo di pressione 20° in Nylon 6÷30% FV

BEVEL GEAR PAIRS WITH NORMAL AXES PRESSURE ANGLE 20° IN NYLON 6÷30% GF
 KEGELRADGETRIEBE MIT NORMALER ACHSE EINGRIFFSWINKEL 20° AUS NYLON 6÷30% GF
 COUPLES CONIQUES A AXES NORMAUX ANGLE DE PRESSION 20° EN NYLON 6÷30% FV
 PARES CONICOS DE EJES NORMALES ANGULO DE PRESIÓN 20° DE NYLON 6÷30% FV

2



Rapporto 1:1

Ratio 1:1 Verhältnis 1:1 Rapport 1:1 Relación 1:1

M 1

M 1.5

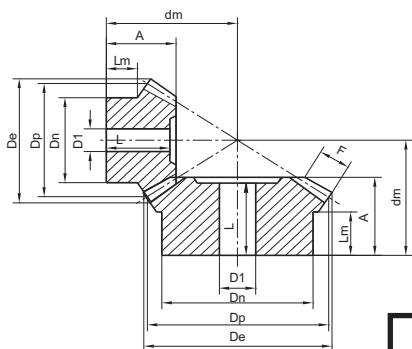
M 2

M 2.5

M 3

M 3.5

Z	COD	De	Dp	A	F	Dn	D1	dm	L	Lm
16	CN01016R01	17.8	16	14	4	13	5	18,59	14	9
16	CN15016R01	25	24.0	18	6	20	8	25.1	17	8.9
20	CN15020R01	32.1	30.0	20	8	22	6	28.7	18	9
30	CN15030R01	47.1	45.0	25	10	35	12	39.7	22.5	12
16	CN02016R01	34.8	32.0	20	9	25	10	28.8	17	9.3
20	CN02020R01	42.8	40.0	27	12	32	8	35.7	22	12
30	CN02030R01	62.8	60.0	30	16	50	12	47.8	27	12.8
16	CN25016R01	43.5	40.0	27	10	30	12	37.3	22	13.3
20	CN25020R01	53.5	50.0	30	12	38	12	45.9	27	16
30	CN25030R01	78.5	75.0	35	18	50	14	59.1	32	16
16	CN03016R01	52.2	48.0	30	12	38	11	44.2	26	16.2
20	CN03020R01	64.2	60.0	35	18	44	14	51.1	31	13.6
30	CN03030R01	94.2	90.0	40	22	60	20	68.1	36	19
20	CN35020R01	74.9	70.0	40.5	22	56	14	58.6	36	19



Rapporto 1:2

Ratio 1:2 Verhältnis 1:2 Rapport 1:2 Relación 1:2

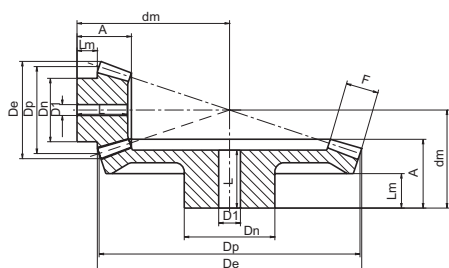
M 1.5

M 2

M 2.5

M 3

Z	COD	De	Dp	A	F	Dn	D1	dm	L	Lm
16	CN15016R02	26.7	24	18.5	8	18	8	34.9	17	10.3
32	CN15032R02	49.3	48	20	8	32	12	27.5	17.5	10
16	CN02016R02	35.6	32	23	10	24	10	45.4	21	12.2
32	CN02032R02	65.8	64	25	10	40	12	35.2	22	10
16	CN25016R02	44.4	40	27.5	12	30	12	56.0	25	14.4
32	CN25032R02	82.2	80	30	12	50	15	43.5	26.5	10
16	CN03016R02	53.4	48	28	15	40	14	61.6	25	11.6
32	CN03032R02	98.7	96	33	15	60	15	50.4	30.5	15



Rapporto 1:3

Ratio 1:3 Verhältnis 1:3 Rapport 1:3 Relación 1:3

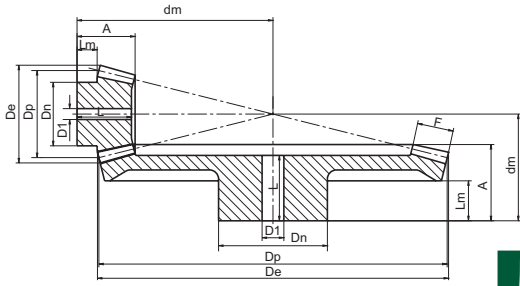
M 1.5

M 2

M 2.5

M 3

Z	COD	De	Dp	A	F	Dn	D1	dm	L	Lm
16	CN15016R03	26.9	24	22	12	20	8	46.3	21	9.7
48	CN15048R03	72.9	72	21	12	42	15	29.2	19	12
16	CN02016R03	35.8	32	25.5	15	25	10	58.9	24	9.4
48	CN02048R03	97.3	96	26	15	50	15	35.9	22	13
16	CN25016R03	44.7	40	28	18	34	14	70.4	26	9.2
48	CN25048R03	121.6	120	32	18	60	20	44.6	27	16
16	CN03016R03	53.7	48	30	18	35	10	84.2	28	11.2
48	CN03048R03	145.9	144	38	18	50	20	54.1	32	19



Rapporto 1:4

Ratio 1:4 Verhältnis 1:4 Rapport 1:4 Relación 1:4

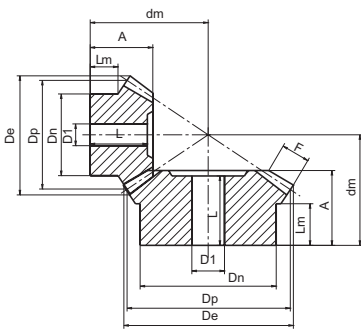
M 1.5

M 2

M 2.5

M 3

Z	COD	De	Dp	A	F	Dn	D1	dm	L	Lm
16	CN15016R04	26.9	24	25	12	18	10	61.1	24	12.2
64	CN15064R04	96.7	96	25	12	60	15	33	22	13
16	CN02016R04	35.9	32	24	15	25	12	73.1	23	8.5
64	CN02064R04	129	128	28	15	70	20	38.9	24	14
16	CN25016R04	44.9	40	30.5	18	32	15	92.6	29	11.7
64	CN25064R04	160	160	35	18	80	20	48.8	30	16
16	CN03016R04	53.8	48	32	20	35	10	108	30	11.1
64	CN03064R04	193.5	192	42	20	60	19	58.8	36	22



Rapporto 1:1.5

Ratio 1:1.5 Verhältnis 1:1;5 Rapport 1:1.5 Relación 1:1.5

M 2

Z	COD	De	Dp	A	F	Dn	D1	dm	L	Lm
20	CN02020R15	43.3	40	23	10	30	8	43.3	23	10.2
30	CN02030R15	62.2	60	27	10	50	11	40.6	27.5	15.2