

6



GIUNTI

GEAR COUPLINGS
KUPPLUNGSSTÜCKE
JOINTS DENTES
JUNTAS

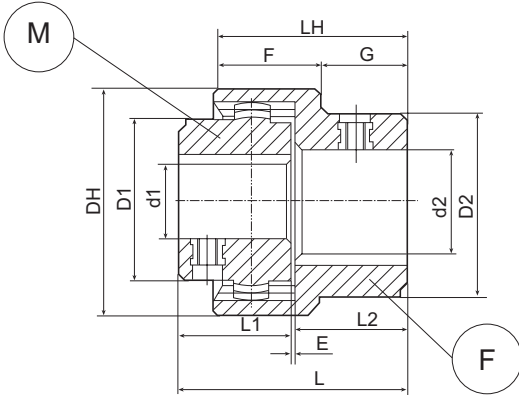


GIUNTI DENTATI OSCILLANTI

in materia plastica

Thermoplastic gear couplings
Kunststoffkupplungsstücke
Joints dentés oscillants en matière plastique
Juntas dentadas oscilantes de plástico

6



LEGENDA/LEGEND/LEGENDE
LE'GENDE/LEYENDA

M = Semigiunto maschio
M = Male coupling
M = Nabenteil
M = Semi-joint mâle
M = Semi junta macho

F = Semigiunto femmina
F = Female coupling
F = Taschenteil
F = Semi-joint femelle
F = Semi junta hembra

- Giunto in poliammide tipo PA 66-Y10
- Compensa disallineamenti radiali, angolari e assiali
- Di semplice montaggio
- Di peso ridotto e ridotto momento d'inerzia
- Campo d'impiego : -25°C;160°C
- Disponibile con foro finito e cave per chiavetta sec. DIN 6885 e grano di fissaggio M5
- Toll. Foro: H7, Cava per chiavetta: ± 0,08

- Gear couplings in polyamide type PA 66-Y10
- Compensation of radial, angular and axial maladjustments
- Easy assembling
- Low weight and reduced moment of inertia
- Use temperature: -25°C; 160°C
- Available with finished hole and keyways according to DIN 6885 and security dowel M5
- Hole tolerance: H7, Keyway: ±0,08

- Kupplungsstück aus Polyamide PA 66-Y10
- Ausgleich der radialen, winkligen, axialen Entzerrung
- Einfaches Zusammenbauen
- Mit reduziertem Gewicht und minimalem Trägheitsmoment
- Verwendungsbereich: -25°/ 160°C
- Mit Fertigbohrung und Keilnute laut DIN 6885 und Befestigungsdübel M5 lieferbar
- Toleranz der Bohrung: H7; Keilnute: ± 0,08

- Joint en polyamide PA 66-Y10
- Compensation des désalignements radiaux, angulaires et axiaux
- Assemblage facile
- Poids et moment d'inertie réduits
- Température d'emploi: -25°C; 160°C
- Disponible avec trou fini et rainures de clavette selon les normes DIN 6885 et tourillon de fixation M5
- Tolérance du trou: H7, Rainure de clavette: ±0,08

- Junta de poliamida tipo PA 66-Y10
- Compensación desalineaciones radiales, angulares y axiales
- Fácil de ensamblar
- De peso reducido y reducido momento de inercia
- Campo de empleo: -25°C;160°C
- Disponible con agujero acabado y ranuras para chaveta conforme DIN 6885 y clavija de fijación M5
- Tolerancia agujero: H7, ranura para chaveta ± 0,08

ESEMPIO D'ORDINE / EXAMPLE OF ORDER / BEISPIEL EINER BESTELLUNG / EXEMPLE DE COMMANDE / EJEMPLO DE PEDIDOS:

| | | | | | |
|-------|---------------------|-------|----------------------|-------|----------------------------|
| GUG24 | Tipo Giunto | GUG24 | Type of joint | GUG24 | Kupplungsstückmodell |
| 14 | Foro giunto maschio | 14 | Coupling hole male | 14 | Bohrung der Zapfenkupplung |
| 19 | Foro giunto femmina | 19 | Coupling hole female | 19 | Bohrung der Nutkupplung |

| | |
|-------|-----------------------|
| GUG24 | Modèle de joint |
| 14 | Trou du joint mâle |
| 19 | Trou du joint femelle |

| | |
|-------|----------------------|
| GUG24 | Tipo de junta |
| 14 | Agujero junta macho |
| 19 | Agujero junta hembra |

| COD | FORO FINITO FINISHED BORE/FERTIGBOHRUNG TROU FINI/AGUJERO ACABADO | | | | DIMENSIONI (mm) DIMENSIONS (mm)/ABMESSUNGEN (mm)/DIMENSIONS (mm)/DIMENSIONES (mm) | | | | | | | | | | | | |
|-----|---|----|----|----|--|---------------------------|----------|---------------|----|----|----|---|----|----|------|------|--|
| | M | | F | | COPPIA NORMALE Nm | COPPIA di SPUNTO Nm | GIRI/MIN | PESO (gr.) | DH | L1 | L2 | E | L | LH | F | G | |
| | d1 | D1 | d2 | D2 | | | | | | | | | | | | | |
| 20 | 9 | 25 | 9 | 33 | 5 | 10 | 6000 | 43 | 40 | 23 | 23 | 2 | 48 | 40 | 25 | 15 | |
| | 10 | | 10 | | | | | | | | | | | | | | |
| | 11 | | 11 | | | | | | | | | | | | | | |
| | | | 12 | | | | | | | | | | | | | | |
| | | | 13 | | | | | | | | | | | | | | |
| 24 | 9 | 31 | 12 | 38 | 8 | 16 | 6000 | 48 | 46 | 25 | 25 | 2 | 52 | 42 | 24 | 18 | |
| | 10 | | 13 | | | | | | | | | | | | | | |
| | 11 | | 14 | | | | | | | | | | | | | | |
| | 12 | | 15 | | | | | | | | | | | | | | |
| | 13 | | 16 | | | | | | | | | | | | | | |
| | 14 | | 17 | | | | | | | | | | | | | | |
| 28 | 14 | 33 | 14 | 44 | 12 | 24 | 6000 | 70 | 52 | 26 | 26 | 2 | 54 | 45 | 26.5 | 18.5 | |
| | 15 | | 15 | | | | | | | | | | | | | | |
| | 16 | | 16 | | | | | | | | | | | | | | |
| | | | 17 | | | | | | | | | | | | | | |
| | | | 18 | | | | | | | | | | | | | | |